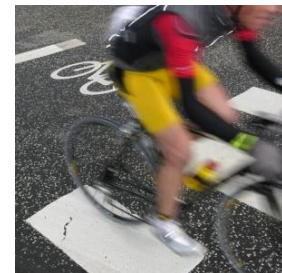


Swedish CEF Transport Secretariat

Connecting Europe
Facility



TRAFIKVERKET



CEF-secretariat – Background and structure

Precondition

- The Member State must approve all applications and follow-up reports(ASR)
- The Member State is required to have a system for monitoring the projects receiving CEF funds

Appointed by the Ministry of Enterprise and Innovation through the instruction

4 § Trafikverket will

6. As regards the trans-European transport network TEN-T and the Fund for the Connecting Europe Facility (CEF)

b) assist the government in the preparation, quality assurance and coordination of grant applications and in the monitoring of projects receiving funding,

Project cycle

Ministry of Enterprise and Innovation

- Approve all project applications (signature after the government decision)
- Monitoring of strategic / political projects (particularly in shipping)
- Approve annual reports (ASR) and final reports

Trafikverket

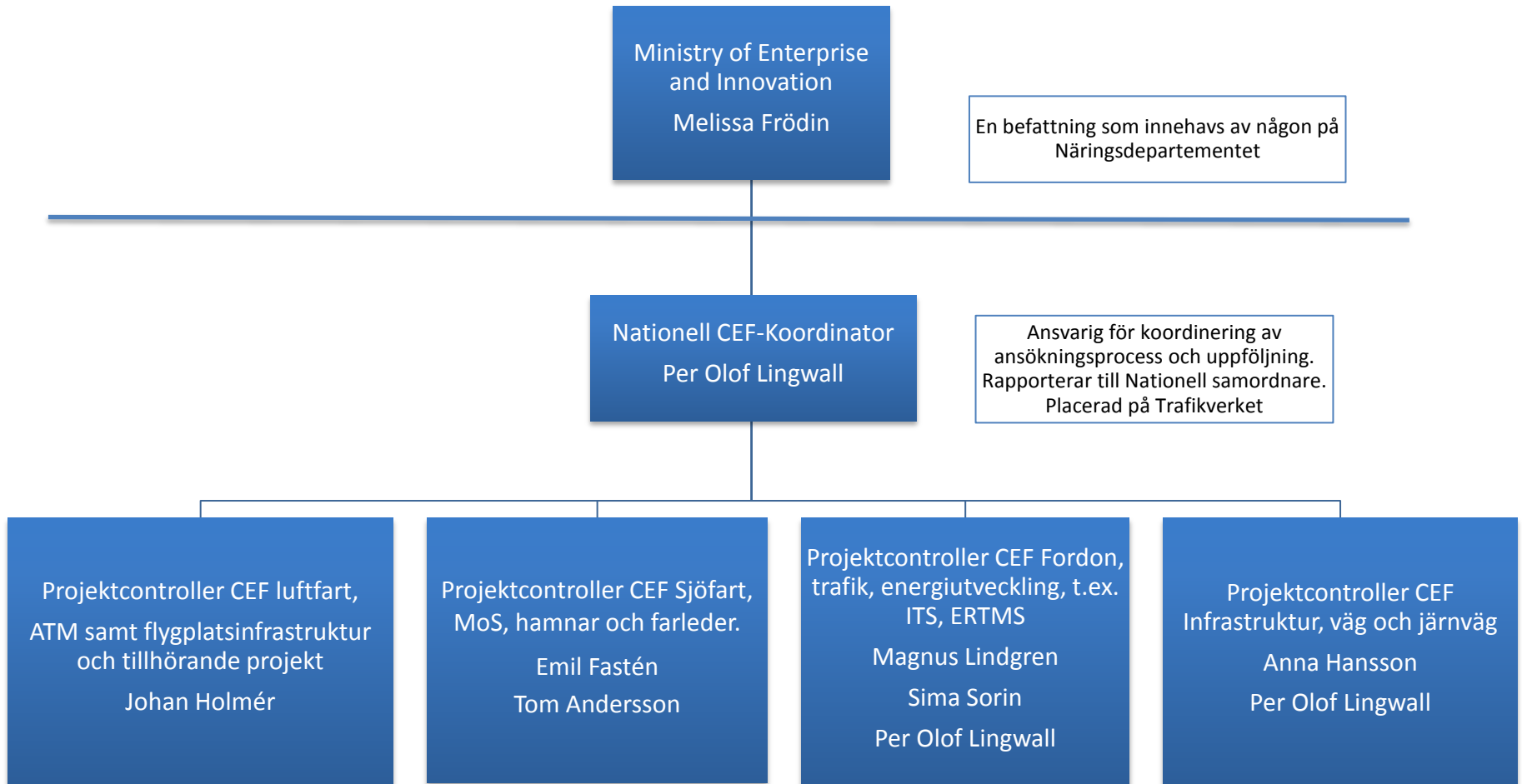
- Provides a CEF Transport Secretariat

Project owners

- Prepares applications for projects
- Run the projects
- Perform all reporting

NOTE Trafikverket can also be project owners

Sekretariatet för CEF-Transporter



Project cycle

Key documents

Application form - Signature of Ministry of Enterprise and Innovation

- Form A basic data
- Form B administrative information
- Form C account of how the project is consistent with EU policy and legislation
- Form D technical and financial information
- Financial Capacity Check the financial ability

Project cycle

Key documents continued

- GA
- SAP = Strategic Action Plan)
- ASR = Annual Status Report) – Signature of Ministry of Enterprise and Innovation
- Interim Payment claim (IPC)
- Final Payment Claim (FPC) – Signature of Ministry of Enterprise and Innovation
 - Technical report
 - Financial report
- Follow-up reports, presentations, etc. (ie such materials as the project develops)

Project controller

- The project controller automatically receive any follow-up reports in accordance with how the project is controlled
- The project controller receives regular reports and any other information considered to be important for monitoring and understanding of the project
- The project controller are invited to major information meetings and conferences organized in the framework of the project
- The project controller can be included in the steering committee (or similar), this is determined by the level of ambition the ministry has and the complexity of the project.

Application 2014

Timetable for the 2015 CEF applications in Sweden

4 november	Call open
15 november	Project-PM to CEF-secretariatet
30 november	CEF Info Day
<u>11 januari kl 09.00</u>	Final and complete applications submitted to the CEF Secretariat
Februari	Government decisions
16 februari	The deadline for applications to INEA

Project-PM

Project-PM forms the basis for the government's approval of proposals for the application of the CEF funding for a project. max four pages!

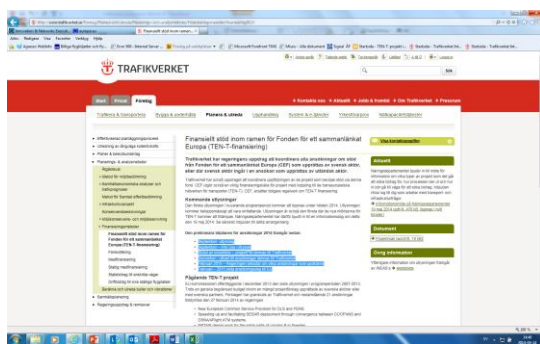
1. Short description of the project / study
2. Grounds for application
3. What priority relates to the application
4. Costs and financing
5. Project maturity
6. Establishment of application / partners
7. Previously, EU funding of the project



Ansökan 2014

Project-PM on Trafikverkets webb:

<http://www.trafikverket.se/Foretag/Planera-och-utreda/Planerings--och-analysmetoder/Finansieringsmetoder/finansiering/>



Project-Pm

Application

- start on time with the application!
- Read the call and work program closely
- Please take an initial contact with the CEF secretariat for information and discussion
- Start early "build" the project consortium, especially for international projects, - take into account other countries review of these projects
- CEF Secretariat can provide advice in the application process but we have no ability to write applications beyond our mission
- Watch our website!

Ansökan 2014

LYCKA TILL!